



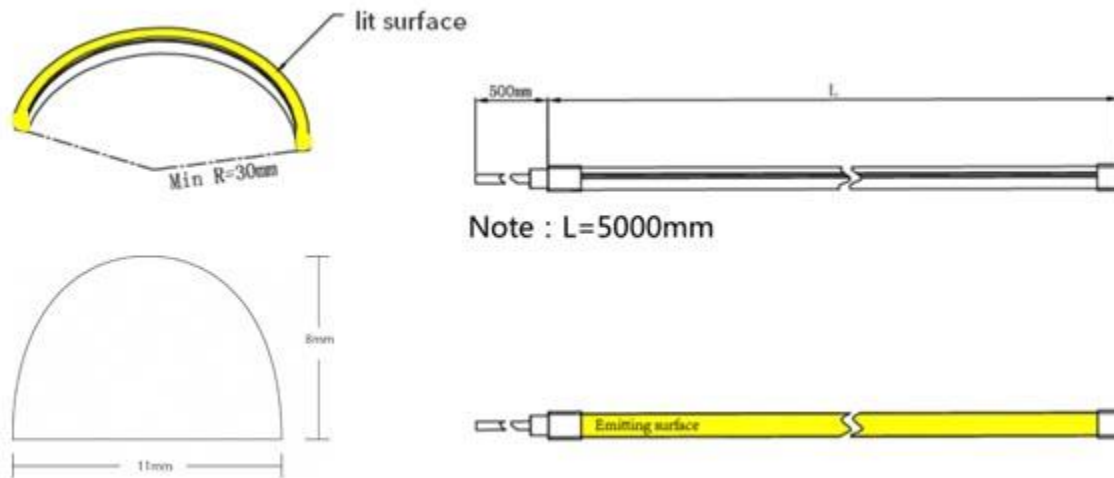
SPEC SHEET: PIXEL-FREE LED STRIP LIGHT

Pixel Free LED is a strip light with an ultra-flexible silicone based jacketing that gives off a diffused and spot-free appearance. Outputting a bright and even light, the densely packed pixels are flexible enough to wrap up to a bend diameter of 6cm. Pixel Free LED Light Strips are also available in various color temperatures of white and cuttable every 20mm (0.75"). Pixel free lighting is great for use as an architectural accent, to bring life to retail displays, custom signage, or simply creating a clean and professional aesthetic for any project you can dream of.

The silicone jacket on the strip can be easily mounted flush to surfaces and bonds well when glued to wood, metal, or plastic. The air gap inside the silicone jacket allow the LEDs to breathe, making it an ideal choice for many outdoor or indoor applications. It also works great when mounted in a channel, or with mounting brackets you can add this light strip almost anywhere.

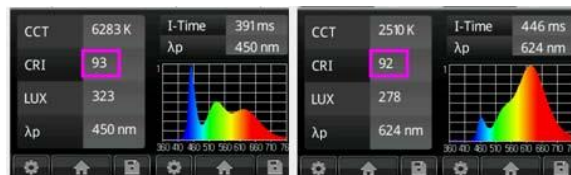
Size	SKU	Color	Voltage	Brightness	Consumption	RATING
8 x 11mm	LDS001	Cool White (5000K)	24V DC	700 Lumens/m	12w/m	IP67
8 x 11mm	LDS002	Natural White (3400K)	24V DC	650 Lumens/m	12w/m	IP67
8 x 11mm	LDS003	Warm White (2700K)	24V DC	600 Lumens/m	12w/m	IP67
8 x 11mm	LDS102	GREEN	24V DC	NA	12w/m	IP67
8 x 11mm	LDS103	RED	24V DC	NA	12w/m	IP67
8 x 11mm	LDS107	BLUE	24V DC	NA	12w/m	IP67

STRUCTURAL DIAGRAM:



Product Features:

- 160° Light Angle Illumination
- Ultra Flexible & Waterproof IP67 Jacketing
- Can be Easily Affixed to a Range of Surface Types
- Pixel Diffusion to Eliminate Hot Spots and Shadowing
- High Quality LED Chipset (>90 CRI)

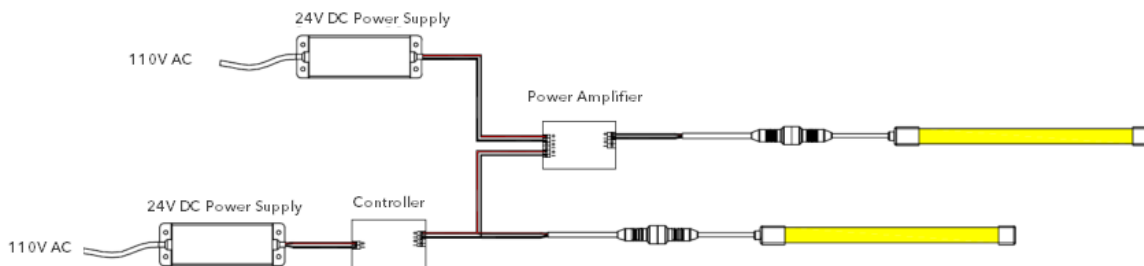


WIRING DIAGRAM

NON-DIMMABLE



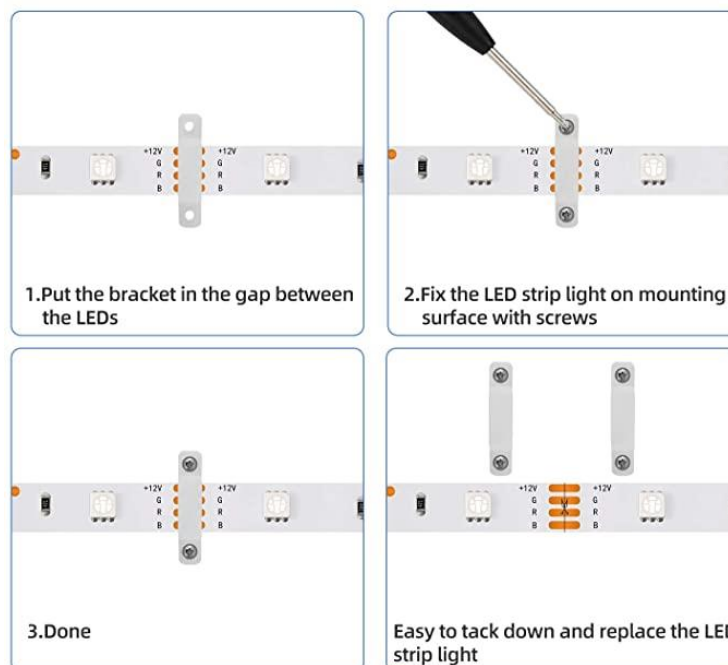
DIMMABLE



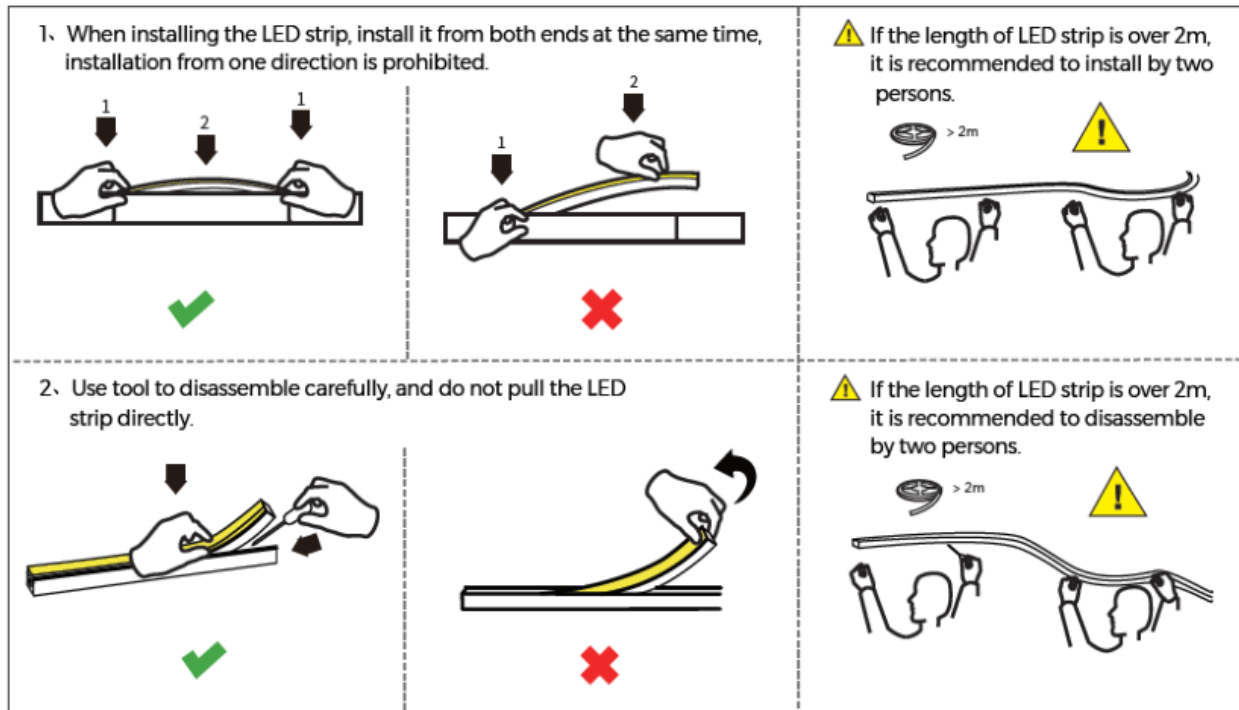
INSTALLATION INSTRUCTIONS

Using mounting clips - Make sure the mounting clips are on the same plane to avoid awkward bending of the strip. The channel is meant to move up and down, like a roller coaster. Not side to side.

Mounting Clips with Screws

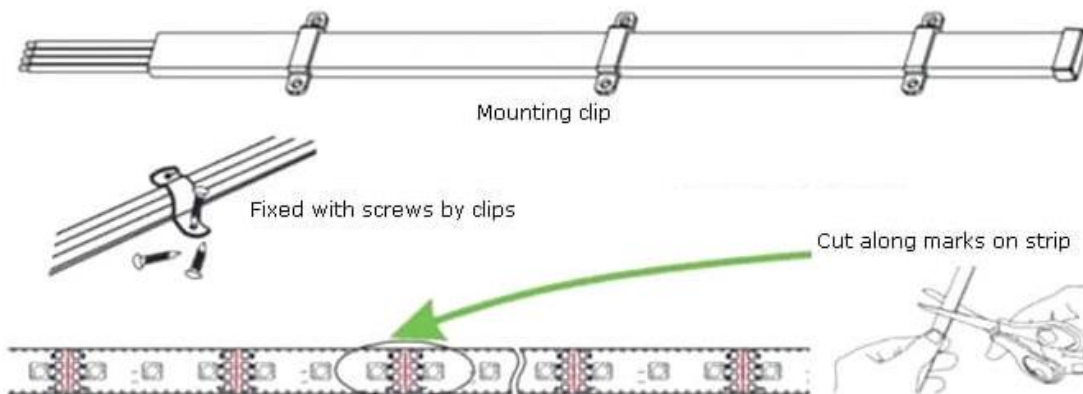


Installation into linear channels or substrates - It is recommended to use caution when inserting the strip into channels and various substrates. LED is not meant to have sharp bends, so make sure to use extreme caution when inserting or removing the strip from a channel.



CUTTING THE LED STRIP

Cutting the LED is slightly different than other non-protected LEDs. First, cut the top of the silicone jacketing material, and pull the jacketing apart. You will notice the LEDs are exposed underneath the jacket. Find the cut line on the LED Strip and cut along the mark.



FAQ

Can Pixel-Free LED be cut?

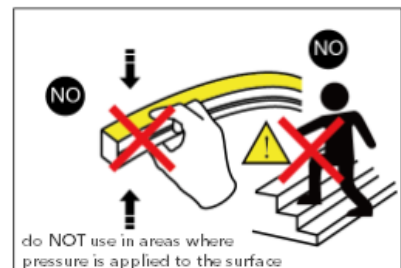
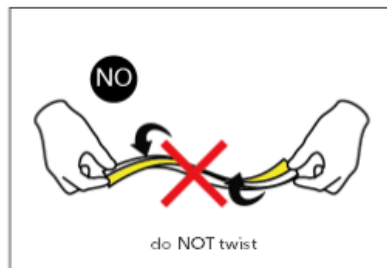
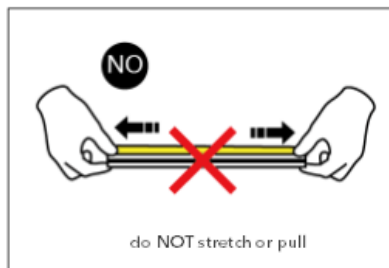
Yes, cut point on Pixel-Free LED can be cut every 25mm (~1"). Any cut point should be sealed with a silicon adhesive along with the Silicon Pixel-Free LED end caps. These end caps keep debris and moisture from entering when a waterproof adhesive (like silicon glue) is applied.

Is Pixel-Free LED able to bend back and forth?

While Pixel-Free LED is one of the tightest bending radius LED Strips in its class (50mm = 2"), back and forth bending can cause premature failure of the strip. We recommend handling the product with care, and bending minimally while the product is placed in its fixed location. Do not try to stretch the LED to pull it taught over long distances, and do not twist or distort the jacket to turn into tight corners. Doing so can cause failure to the strip.

Can You Install Pixel-Free On Floors?

Pixel-Free LED is able to be installed on steps to illuminate pathways, however it should be used on the bottom side of steps where minimal to no pressure is applied. Do not install in areas where it will be walked on or have pressure applied.



PRECAUTIONS

- Use 24V DC Isolated Power Supply to drive Pixel-Free LED and the confirm ripple wave of constant voltage source is less than 5%. Do not use RC Voltage reduction or non-isolated power supply to drive LED Strip.
- In order to guarantee sufficient voltage is available to drive LED Strip in all conditions, make sure power supply is rated for 20% more than LED Strip consumption.
- Do not touch AC Power Supply when powered on
- Polarity Matters! Make sure to wire positive and negative poles of wires during installation to avoid damage to the strip.
- Avoid scratching, distorting, and repeated bending of product during installation. Not following this can cause irreparable damage to strip.
- Do not bend Pixel-Free LED with a radius less than 50mm (2")
- Product is not intended to be submerged and used in swimming pools or hot tubs
- Professional installation recommended