



## SPEC SHEET: AURALUX COB MULTI-COLORED LIGHT

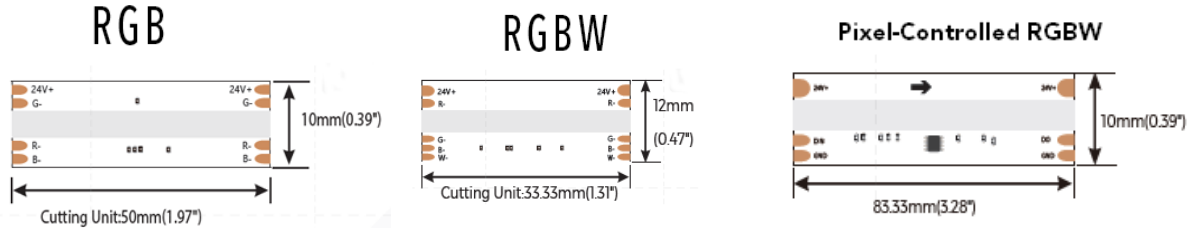
Auralux COB (Chip On Board) RGB and RGBW is a unique linear LED Strip combining light diffusion materials with extremely easy peel and stick installation. The tightly packed pixels allow for even ambient lighting right out of the box, but DOES require some additional diffusion in a linear channel or diffuser to help full remove any pixelization. The slim profile hides easily around cabinets and provides a high CRI (over 90), and superior brightness compared to other LED alternatives.

Auralux COB Light Strips are available in various RGB (Red, Green, Blue) options depending on your intended application, including RGB, RGBW, Pixel-Controlled RGB+W, and Side Emitting RGB. This product makes a great architectural accent, perfect for commercial, residential, tradeshow, signage and more, creating a beautifully, integrated lit accent to nearly any firm surface. Indoor rated IP20 as a standard, but also available by special order in IP65, or IP67 version.

NOTE: In applications where the lighting is used at less than 100% with only a single color (for instance red), you might notice some shadowing with directly viewed.

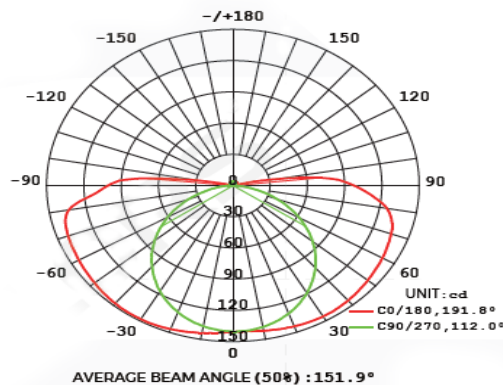
Size	SKU	Color	Voltage	Brightness	Cut Length	CRI	Power Consumption	RATING
10 x 1.6mm	DP4-Series	RGB (Red, Green, Blue)	24V DC	805 Lumens/m	50mm	>90	14.4w/m	IP20
10 x 1.6mm	DP6-Series	RGBW (Red, Green, Blue, 3000K)	24V DC	990 Lumens/m	33.33mm	>90	18w/m	IP20
10 x 1.6mm	DPS4-Series	Pixel-Controlled RGB + W (3000K)	24V DC	775 Lumens/m	83.33mm	>90	18w/m	IP20
10 x 1.6mm	F06-Series	Pixel-Controlled Side Emitting RGB	24V DC	230 Lumens/m	83.33mm	>90	12w/m	IP20

### STRUCTURAL DIAGRAM:

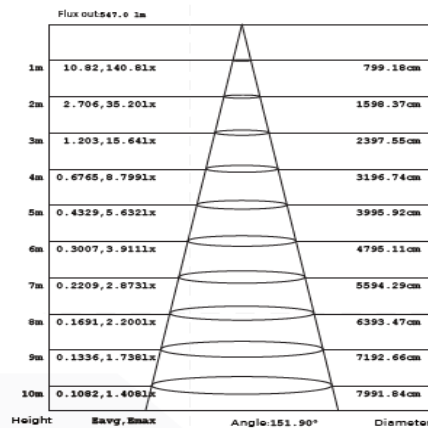


### Product Features:

- Even, Thin Direct-View Illumination
- Flexible & Field Cuttable (Minimum Bending Radius 60mm)
- Can be Easily Affixed to a Range of Surface Types (3M Adhesive Backing)
- Pixel Diffusion Helps Reduce Pixelization
- High Quality LED Chipset (>90 CRI)



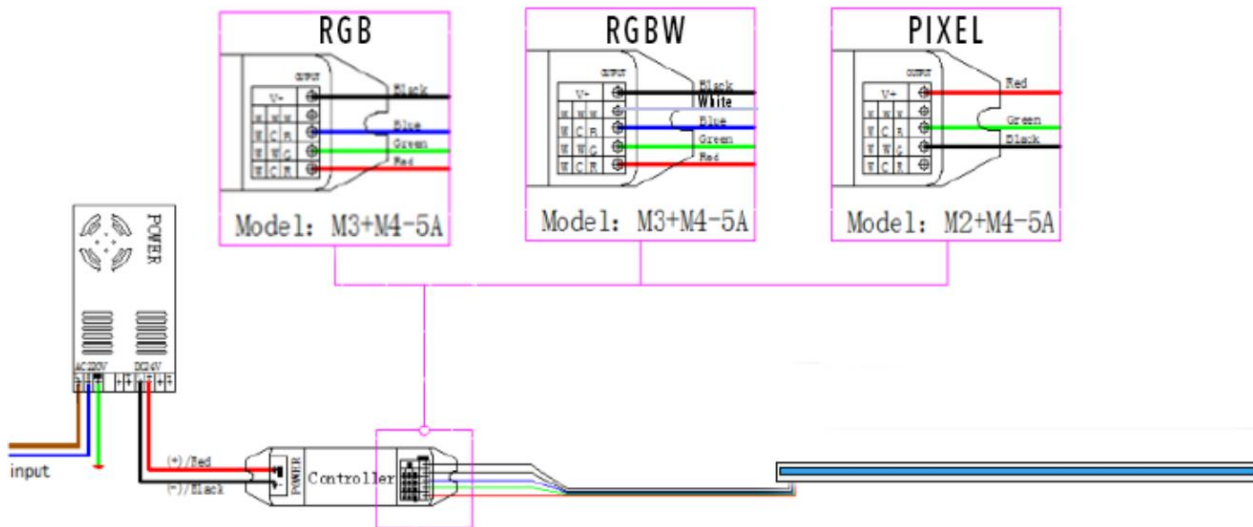
- Photometric of 1M strip



- AAI Figurestrip

## WIRING DIAGRAM

### DIMMABLE



## PIXEL-CONTROL

The Pixel-Controlled version uses an SK6812 (RGBW) protocol to adjust the lighting. It uses 12 pixels per meter to adjust lighting, and consumes 4 channels (Red, Green, Blue, White) per pixel, so a total of 48 channels per meter (or 240 channels per strip).

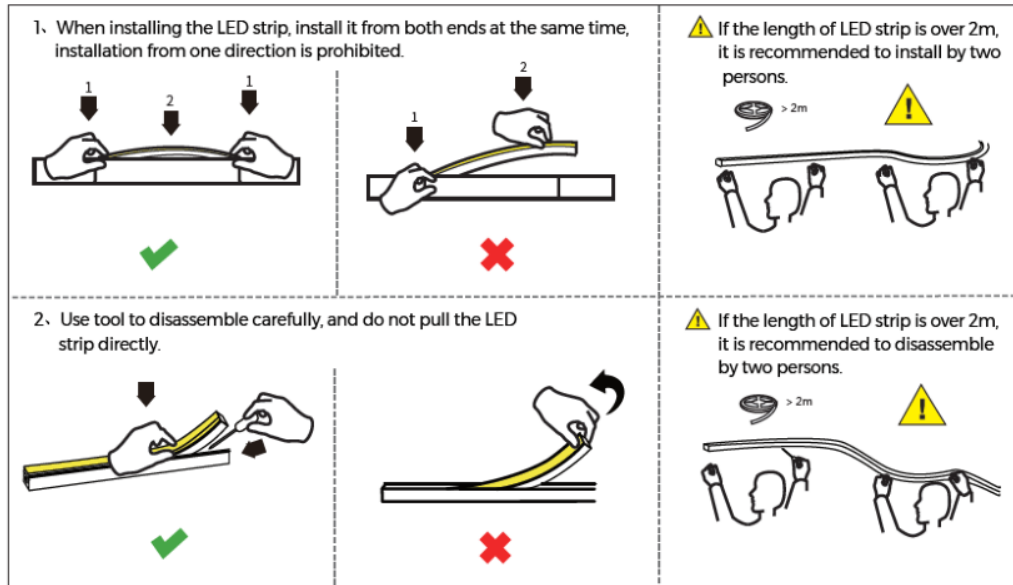
## INSTALLATION INSTRUCTIONS

**Peel & Stick Method** - Easily the best feature of this LED Strip is to be able to add direct view lighting to firm surfaces like woods, metals and plastics. To apply to a firm surface, simply peel the 3M adhesive backing and attach to your surface. We recommend lightly sanding your surface material prior to applying LED Strip for best results.



Make sure the LED Strip runs linearly along on the same plane to avoid awkward bending of the strip. This LED Strip is meant to move up and down, like a roller coaster. Not side to side.

**Installation into linear channels or substrates** - It is recommended to use caution when inserting the strip into channels and various substrates. LED is not meant to have sharp bends, so make sure to use extreme caution when inserting or removing the strip from a channel.



## FAQ

Can Auralux COB be cut?

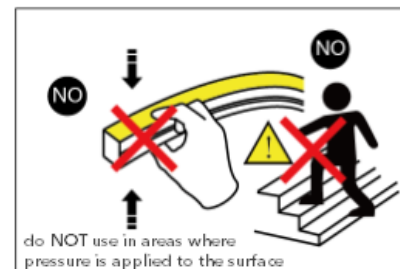
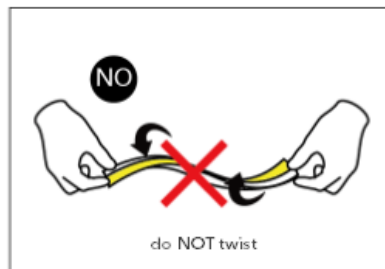
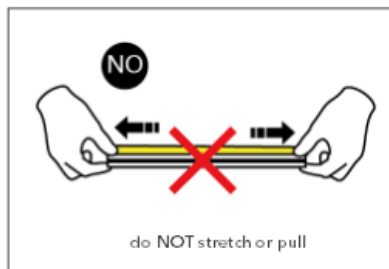
Yes, cut point on Auralux COB lights can be cut every 33-83mm, and is field cuttable for easy installation.

Is Auralux COB able to bend back and forth?

While Auralux COB lights strips are one of the tightest bending radius LED Strips in its class (50mm ~ 2"), back and forth bending can cause premature failure of the strip. We recommend handling the product with care, and bending minimally while the product is placed in its fixed location. Do not try to stretch the LED to pull it taut over long distances, and do not twist or distort the jacket to turn into tight corners. Doing so can cause failure to the strip.

Can You Install Auralux COB To Floors?

Auralux COB is able to be installed on steps to illuminate pathways, however it should be used on the bottom side of steps where minimal to no pressure is applied. Do not install in areas where it will be walked on or have pressure applied.



## PRECAUTIONS

- Use 24V DC Isolated Power Supply to drive Auralux COB and the confirm ripple wave of constant voltage source is less than 5%. Do not use RC Voltage reduction or non-isolated power supply to drive LED Strip.
- In order to guarantee sufficient voltage is available to drive LED Strip in all conditions, make sure power supply is rated for 20% more than LED Strip consumption.
- Do not touch AC Power Supply when powered on
- Polarity Matters! Make sure to wire positive and negative poles of wires during installation to avoid damage to the strip.
- Avoid scratching, distorting, and repeated bending of product during installation. Not following this can cause irreparable damage to strip.
- Do not bend Auralux COB with a radius less than 50mm (2")
- Product is not intended to be submerged and used outdoors
- Professional installation recommended